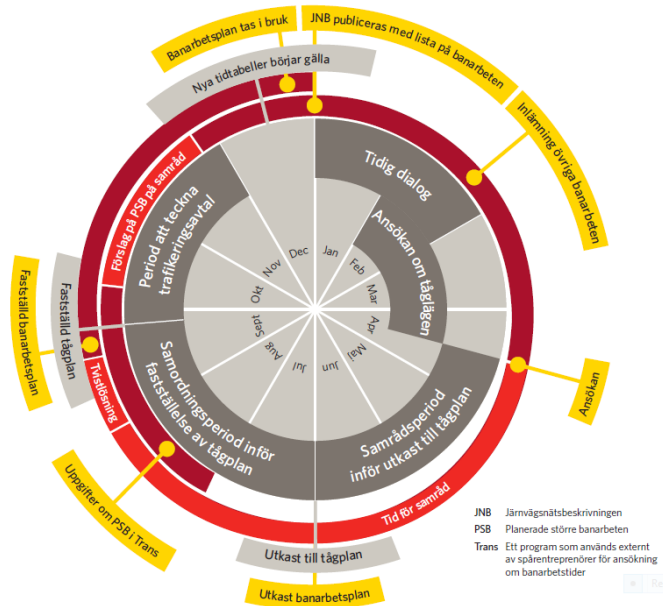


**Workshop Region
Värmland 190904
Bengt Eriksson
Trafikplanerare
TRpkv Göteborg**



TRAFIKVERKET

Tågplaneprocessen



Revisionsperioder T19

Tågplan T19 181209-191214



Rev 1 (9/11)
v.1850 – 1912

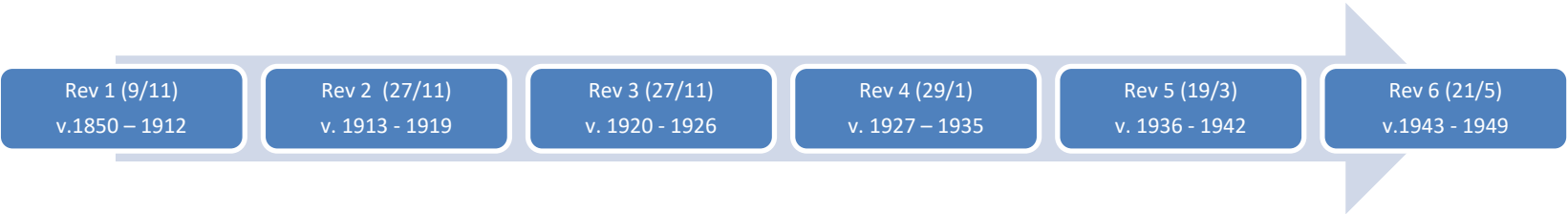
Rev 2 (27/11)
v. 1913 - 1919

Rev 3 (27/11)
v. 1920 - 1926

Rev 4 (29/1)
v. 1927 – 1935

Rev 5 (19/3)
v. 1936 - 1942

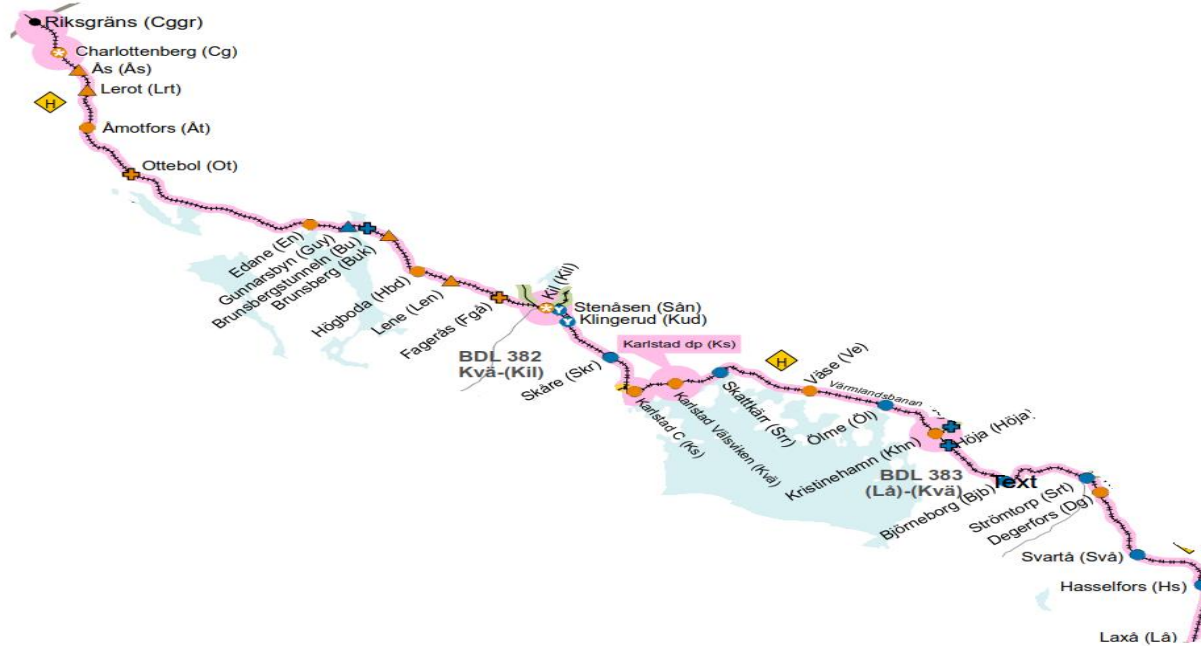
Rev 6 (21/5)
v.1943 - 1949

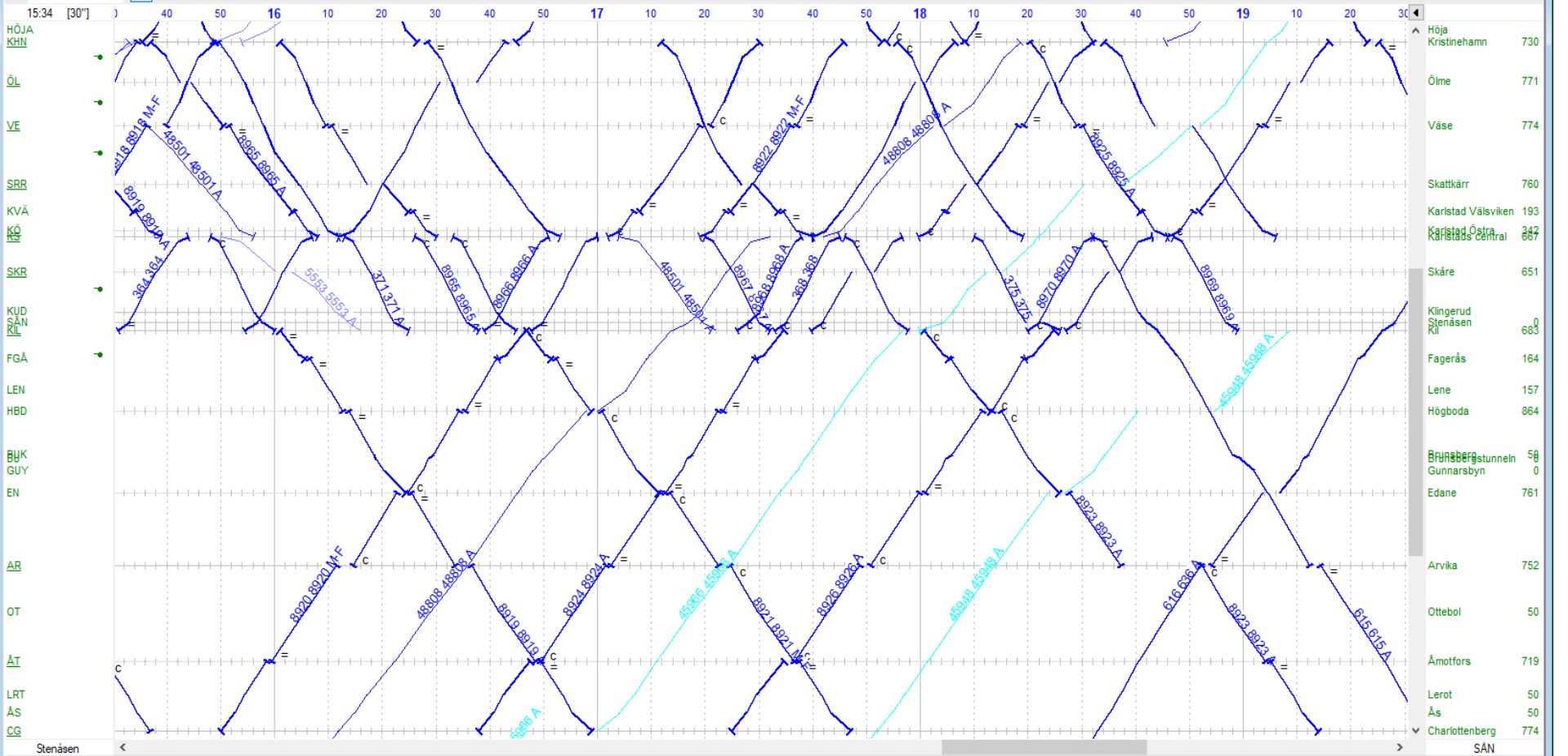


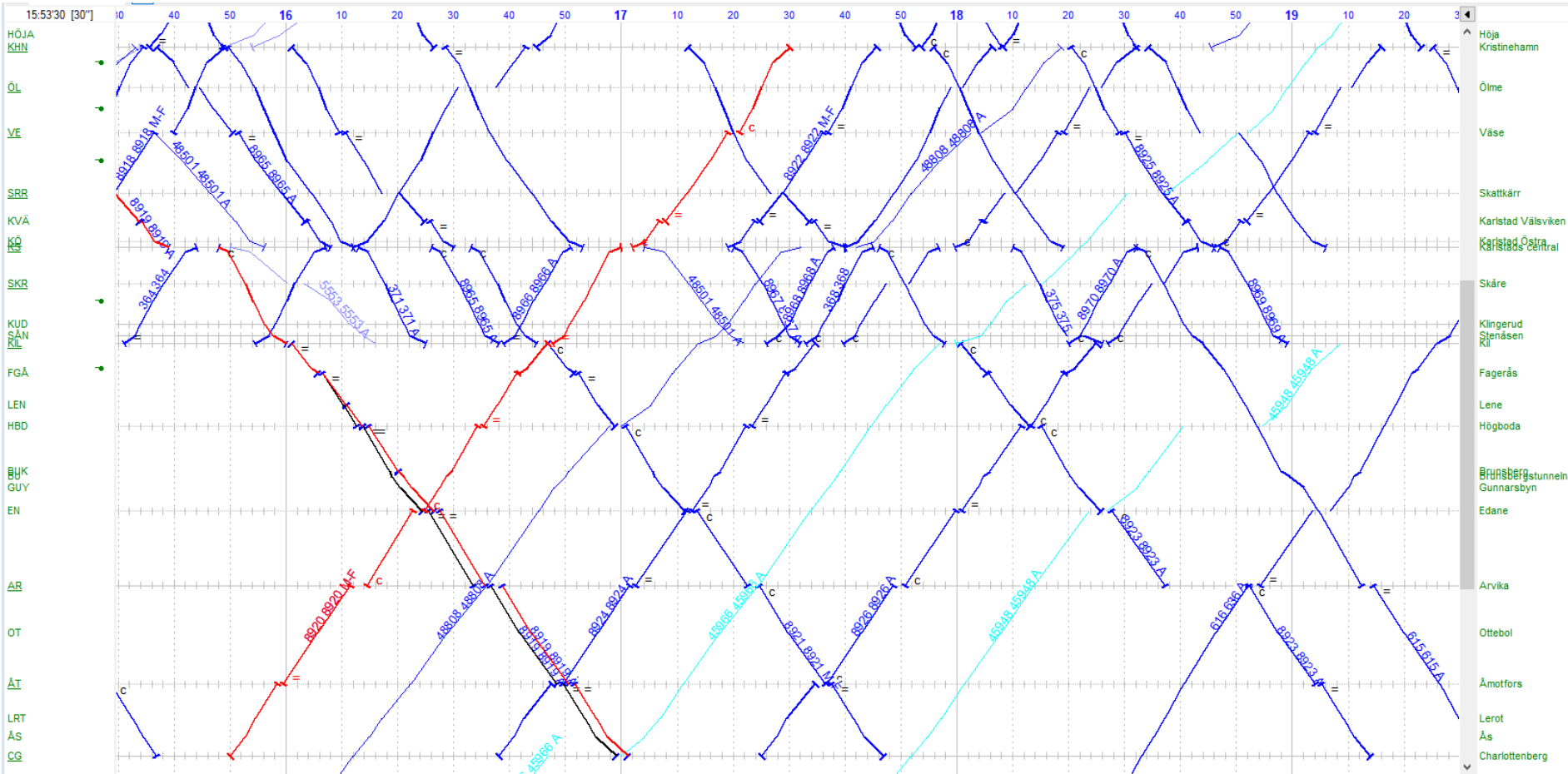
T20 i siffror

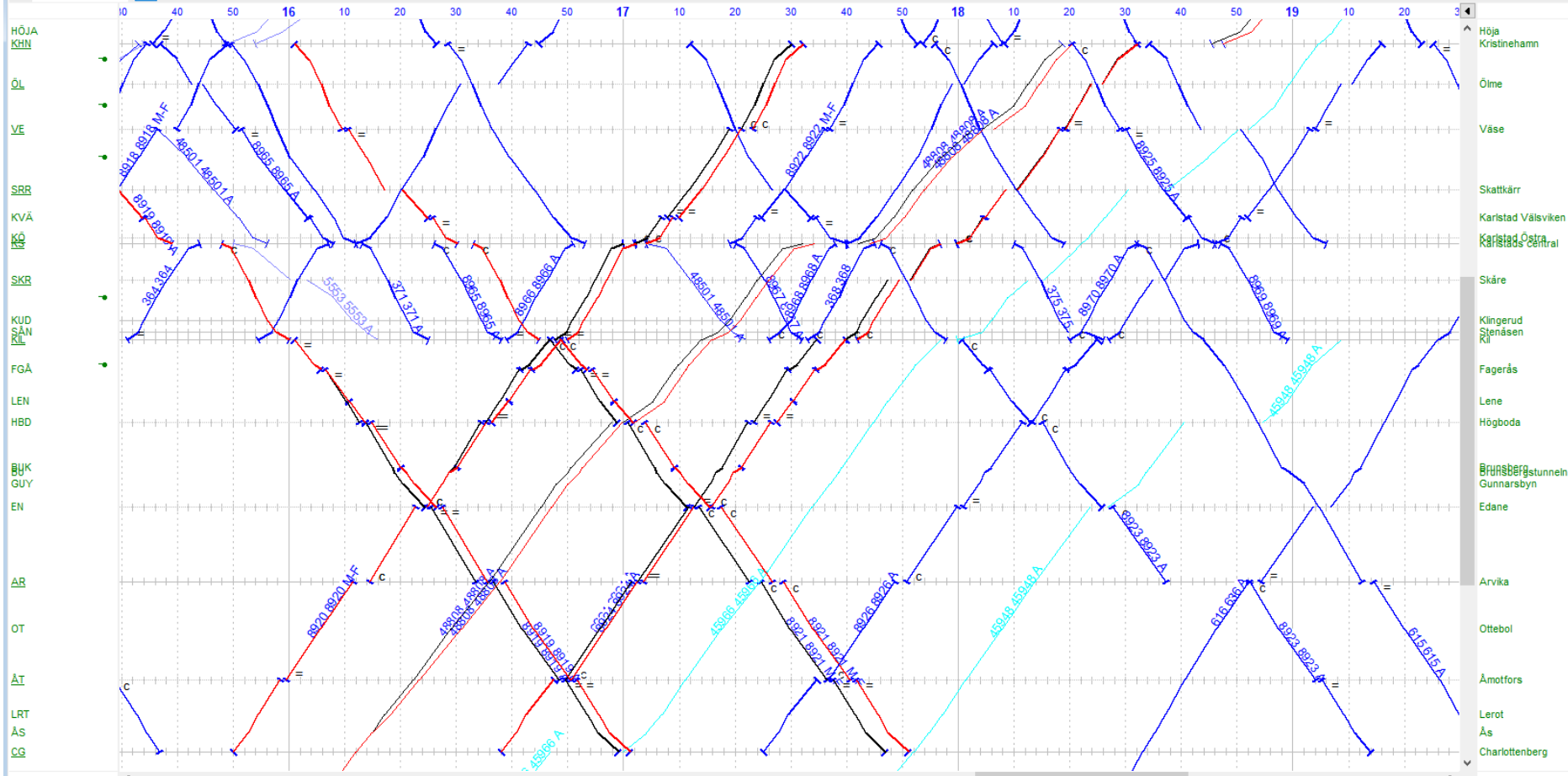
- Antal ansökta tåglägen i T18 9628
- Antal ansökta tåglägen i T19 9610
- Antal ansökta tåglägen i T20 11679 en ökning med 17,71%
- Antal ansökta banarbeten i T20 1908
- Antal ansökta uppställningar i T20 2687

Infrastruktur Värmlandsbanan









Frågor?

